



## CPLUS-VPE2DD

4K UHD+ HDMI Dolby Digital & DTS  
Stereo Decoder



Operation Manual



## DISCLAIMERS

The information in this manual has been carefully checked and is believed to be accurate. Cypress Technology assumes no responsibility for any infringements of patents or other rights of third parties which may result from its use.

Cypress Technology assumes no responsibility for any inaccuracies that may be contained in this document. Cypress also makes no commitment to update or to keep current the information contained in this document.

Cypress Technology reserves the right to make improvements to this document and/or product at any time and without notice.

## COPYRIGHT NOTICE

No part of this document may be reproduced, transmitted, transcribed, stored in a retrieval system, or any of its part translated into any language or computer file, in any form or by any means—electronic, mechanical, magnetic, optical, chemical, manual, or otherwise—without express written permission and consent from Cypress Technology.

© Copyright 2018 by Cypress Technology.

All Rights Reserved.

## TRADEMARK ACKNOWLEDGMENTS

All products or service names mentioned in this document may be trademarks of the companies with which they are associated.



Manufactured under license from Dolby Laboratories. Dolby and the double-D symbol are trademarks of Dolby Laboratories.



Manufactured under license under U.S. Patent Nos: 5,956,674; 5,974,380; 6,487,535 & other U.S. and worldwide patents issued & pending. DTS, the Symbol, & DTS and the Symbol together are registered trademarks & DTS 2.0+Digital Out is a trademark of DTS, Inc. Product includes software. © DTS, Inc. All Rights Reserved.

---



## SAFETY PRECAUTIONS

Please read all instructions before attempting to unpack, install or operate this equipment and before connecting the power supply.

Please keep the following in mind as you unpack and install this equipment:

- Always follow basic safety precautions to reduce the risk of fire, electrical shock and injury to persons.
- To prevent fire or shock hazard, do not expose the unit to rain, moisture or install this product near water.
- Never spill liquid of any kind on or into this product.
- Never push an object of any kind into this product through any openings or empty slots in the unit, as you may damage parts inside the unit.
- Do not attach the power supply cabling to building surfaces.
- Use only the supplied power supply unit (PSU). Do not use the PSU if it is damaged.
- Do not allow anything to rest on the power cabling or allow any weight to be placed upon it or any person walk on it.
- To protect the unit from overheating, do not block any vents or openings in the unit housing that provide ventilation and allow for sufficient space for air to circulate around the unit.

## REVISION HISTORY

VERSION NO.	DATE	SUMMARY OF CHANGE
RDV1	17/07/15	Preliminary release
VS1	12/02/18	Final technical review



## CONTENTS

<b>1. Introduction</b>	<b>1</b>
<b>2. Applications</b>	<b>1</b>
<b>3. Package Contents</b>	<b>1</b>
<b>4. System Requirements</b>	<b>1</b>
<b>5. Features</b>	<b>2</b>
<b>6. Operation Controls and Functions</b>	<b>3</b>
6.1 Front Panel	3
6.2 Rear Panel	4
6.3 Virtual COM Port Control	5
6.4 EDID Commander	7
6.4.1 EDID Controller Tab	7
6.4.2 EDID Creator Tab	8
6.4.3 System Tab	9
<b>7. Connection Diagram</b>	<b>10</b>
<b>8. Specifications</b>	<b>11</b>
8.1 Technical Specifications	11
8.2 Video Specifications	12
8.3 Audio Specifications	13
<b>9. Acronyms</b>	<b>14</b>



## 1. INTRODUCTION

This HDMI Dolby Digital & DTS Stereo Decoder supports the transmission of high bandwidth (18Gbps) video and allows the associated audio signal to be simultaneously extracted and split to both digital and analog audio outputs, providing high quality audio and video performance.

This unit can decode standard Dolby Digital & DTS formats up to 5.1 and output the audio as stereo (LPCM 2.0) over HDMI, S/PDIF (optical and coaxial) and analog RCA connections. It can also support the passthrough of Bitstream, HD Bitstream, or LPCM 7.1 with audio sampling rates up to 192kHz if needed. If the connected display supports ARC (Audio Return Channel), and has it enabled, then this unit can extract the ARC audio and output it via all available audio outputs.

Both the input and output HDMI ports support 4K UHD resolutions up to 4K@60Hz (4:4:4, 8-bit). Built-in EDID management support allows the user to select from multiple EDIDs and, with the use of optional PC software, to upload, download, or edit EDID files.

## 2. APPLICATIONS

- Audio extraction for use with non-HDMI AV receivers or powered speaker systems
- AV system integration and home theater installation
- Supporting HDMI sources on DVI displays with analog or external speaker systems
- HDMI/DVI EDID management

## 3. PACKAGE CONTENTS

- 1×HDMI Dolby Digital & DTS Stereo Decoder
- 1×5V/2.6A DC Power Adapter
- 1×Operation Manual

## 4. SYSTEM REQUIREMENTS

- HDMI source equipment such as a media player, video game console or set-top box.

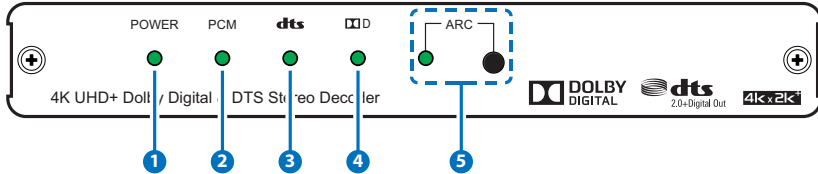
- HDMI receiving equipment such as an HDTV, monitor or audio amplifier.
- Audio receiving equipment such as an audio amplifier or powered speakers.
- The use of "Premium High Speed HDMI" cables is highly recommended.

## 5. FEATURES

- HDMI input and output with 18Gbps (600MHz) 4K UHD support
- DVI 1.0 compatible with the use of an HDMI-DVI adaptor
- HDCP 1.4 and 2.2 compliant
- Supports HD resolutions up to 3840×2160@60Hz (4:4:4, 8-bit) & 4096×2160@60Hz (4:4:4, 8-bit)
- Supports 48-bit Deep Color up to 1080p@60Hz
- Supports passthrough of LPCM 7.1, Bitstream and HD Bitstream audio formats over HDMI
- Embedded Dolby Digital Decoder technology
- Embedded DTS 2.0+Digital Out Decoder technology
- Integrated digital interpolation filter and Digital-to-Analog Converter (DAC)
- Supports LPCM sampling rates up to 96kHz
- Supports Dolby Digital sampling rates up to 48kHz
- Supports DTS sampling rates up to 96kHz
- Simultaneous audio output via HDMI, analog stereo, Coaxial and Optical
- Supports coaxial and optical audio sampling rates up to 96kHz
- Supports extracting the HDMI audio signal from an HDTV's ARC feature
- Provides EDID management with EDID bypass and 1 user modifiable EDID
- PC based EDID management tool support
- Supports RS-232 style control via a Virtual COM port over USB

## 6. OPERATION CONTROLS AND FUNCTIONS

### 6.1 Front Panel

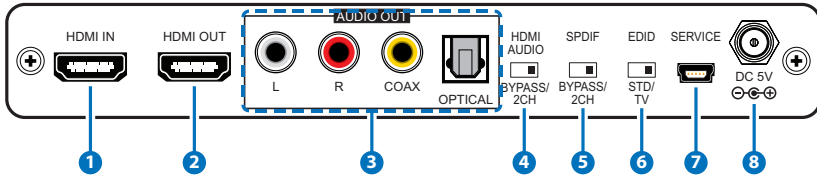


- 1 POWER:** This LED will illuminate to indicate the unit is on and receiving power.
- 2 PCM:** This LED will illuminate when LPCM audio is detected on the HDMI input. If the ARC function is active, this LED will illuminate when LPCM is detected from the ARC source.
- 3 DTS:** This LED will illuminate when DTS 2.0+Digital audio is detected on the HDMI input. If the ARC function is active, this LED will illuminate when DTS 2.0+Digital audio is detected from the ARC source.
- 4 DOLBY DIGITAL:** This LED will illuminate when Dolby Digital audio is detected on the HDMI input. If the ARC function is active, this LED will illuminate when Dolby Digital audio is detected from the ARC source.
- 5 ARC:** Pressing the this button will enable/disable the unit's ARC (Audio Return Channel) functionality. When the ARC function is enabled, the LED will illuminate and ARC audio sent back from the connected display will be output over all local audio outputs. When the ARC function is not enabled the LED will remain off.

*Note: Please ensure that the connected display supports ARC and that the display's ARC function is enabled before activating the ARC functionality of this unit. Failure to meet these requirements will result in no audio output.*



## 6.2 Rear Panel



- 1 HDMI IN:** Connect to HDMI source equipment such as a media player, game console or set-top box.
- 2 HDMI OUT:** Connect to an HDMI TV, monitor or amplifier for digital video and audio output.
- 3 L/R OUT:** Connect to powered speakers or an amplifier for stereo analog audio output.

**COAX OUT:** Connect to powered speakers or an amplifier for digital audio output using an appropriate coaxial cable.

**OPTICAL OUT:** Connect to powered speakers or an amplifier for digital audio output using an appropriate optical cable.

- 4 HDMI AUDIO BYPASS/2CH:** This switch controls the audio output format for the HDMI port. Moving the switch to the left sets it to "BYPASS" which allows audio to pass unchanged from the HDMI input port. Moving the switch to the right sets it to "2CH" which enables decoding Dolby Digital and DTS audio from the HDMI input and down-mixing it to LPCM 2.0.
- 5 S/PDIF BYPASS/2CH:** This switch controls the audio output format for the S/PDIF audio output ports (Optical and Coaxial). Moving the switch to the left sets it to "BYPASS" which allows audio to pass unchanged from the HDMI input port. Moving the switch to the right sets it to "2CH" which enables decoding Dolby Digital and DTS audio from the HDMI input and down-mixing it to LPCM 2.0.
- 6 EDID STD/TV:** This switch controls which EDID is sent to the connected HDMI input device. Moving the switch to the left sets it to "STD" mode which will use the internal (user) EDID. Moving the switch to the right sets it to "TV" mode which will pass the EDID from the connected display device to the HDMI input device.

*Note: By default the "STD" EDID contains video resolution support up to 1080p@60Hz and audio support including LPCM 2.0 up to*



96kHz, Dolby Digital (5.1 channel) and DTS (5.1 channel).

- 7 SERVICE:** This slot is for EDID management, control and firmware update use. Connect directly to your PC/laptop using a standard Mini-USB cable to connect using the PC software or to send commands (via virtual COM port).
- 8 DC 5V:** Plug the 5V DC power adapter into the unit and connect it to an AC wall outlet for power.

### 6.3 Virtual COM Port Control

COM PORT SETTINGS	
<b>Baud rate</b>	115200
<b>Data bits</b>	8
<b>Parity</b>	None
<b>Stop bits</b>	1
<b>Flow control</b>	None

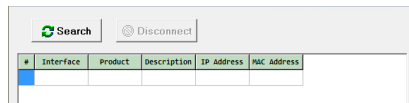
COMMAND	DESCRIPTION & PARAMETERS
<b>?</b>	Show the full command list.
<b>HELP</b>	Show the full command list.
<b>SOURCEDET</b>	Show the current input source detection state.
<b>SINKINFO</b>	Show information about the currently connected display.
<b>HDCPIN N1</b>	Set the HDCP handling mode for the HDMI input.  Available values for <b>N1</b> : 1                   [Follow Input] 2                   [Follow Output] 3                   [Apple Mode]
<b>HDCPIN ?</b>	Show the current HDCP handling mode.


COMMAND	DESCRIPTION & PARAMETERS
<b>ECHO N1</b>	Set the console text echo mode behavior. Available values for <b>N1</b> : 0 [Text echoing is off] 1 [Text echoing is on]
<b>ECHO ?</b>	Show the current text echoing mode.
<b>FADEFAULT</b>	Reset the unit to the factory defaults.
<b>VER</b>	Show the unit's current firmware version.
<b>REBOOT</b>	Reboot the unit.

*Note: Commands will not be executed unless followed by a carriage return. Commands are not case-sensitive.*

## 6.4 EDID Commander

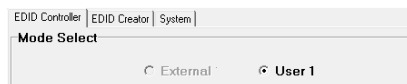
- (1) This unit uses an EDID Management application which allows the user to copy the EDID from an attached display, edit an existing EDID file stored on the PC or create a basic EDID from scratch. The EDID can then be uploaded to the unit for use.
- (2) Please obtain the EDID Management software from your authorized dealer and save it in a directory where you can easily find it.
- (3) Before connecting the unit to your PC, please install the appropriate Virtual COM Port Driver depending on your Windows version. Next, install the EDID Management software.
- (4) After the installation has successfully completed, an icon for it will appear on the windows desktop. Launch the software by double-clicking on the icon and the EDID Management device detection window will open up on your screen.



- (5) After launching the software, power the unit on and then connect it to the PC/laptop using a USB cable. Click on the “ Search” button and any detected units will be displayed in the list. Clicking on a detected unit will open the EDID Commander window.

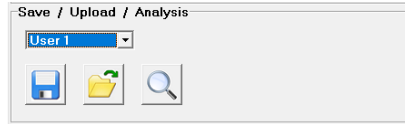
### 6.4.1 EDID Controller Tab



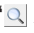
- **Mode Select:** The currently selected EDID is displayed here.




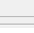
- The “External” EDID corresponds to the “TV” setting on the back of the unit. The “User 1” EDID corresponds to the “STD” setting on the back of the unit. The User 1 EDID is user-replaceable.
- To return the User 1 EDID to its original values, please perform a factory reset on the unit.

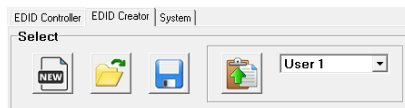
- **Save/Upload/Analysis:** EDIDs may be saved to a PC, uploaded from a PC or analyzed.

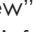



- **Save:** Any EDID from the unit or the connected HDMI display can be saved to your PC as a \*.bin file by selecting the EDID source from the drop down menu and then clicking the “ Save” icon.
- **Upload:** Previously saved EDID files (\*.bin format) can be re-uploaded into the unit by selecting the User EDID to replace from the dropdown and then clicking the “ Upload” icon. Before accepting the upload, the software will check and verify that the EDID's header and checksum values are acceptable.
- **Analysis:** To analyze any EDID stored within the unit, select the EDID to view from the dropdown and click on the “ Analysis” icon.

#### 6.4.2 EDID Creator Tab

- **Select:** Click on the EDID Creator tab to begin designing a new EDID from scratch (select the “ New” icon), to modify an existing EDID stored on the PC as a .bin file (select the “ Load” icon) or to edit an EDID copied from the unit via the EDID Analyzer's edit option.





- Selecting “ New” will automatically populate the various EDID fields with basic information that can be easily edited to match the user's preferences.
- Clicking on the “ Load” icon will open a file load window and after the \*.bin file has been selected and loaded the EDID fields will be populated with the information from that file. The same will happen when the EDID is copied from the EDID Analyzer window.



- **Edit:** The following tabs provide access to a wide range of EDID information which can be edited:



Descriptor	PC Timing	SD/HD/UHD	Audio1	Audio2	Color Space	Others
<b>Manufacturer Name :</b> <input type="text"/>						
<b>Monitor Name :</b> <input type="text"/>						
<b>Product Code :</b> <input type="text"/>						
<b>Serial Number :</b> <input type="text"/>						
<b>Manufacture Year :</b> <input type="text"/>						
<b>Manufacture Week :</b> <input type="text"/>						

- **Descriptor:** This tab allows for the editing of various description and information fields within the EDID file such as Manufacturer Name, Monitor Name, etc.
- **PC Timing & SD/HD/UHD:** These tabs allow for the selection of the resolutions and refresh rates that the EDID will report as supported.
- **Audio1 & Audio2:** These tabs allow for the selection of which audio formats, audio frequencies, channels and speaker locations are supported.
- **Color Space:** This tab allows for the selection of which color formats and bit depths are supported, including BT.2020 and HDR support options.
- **Others:** This tab contains options for supporting 3D and defining the CEC Address.

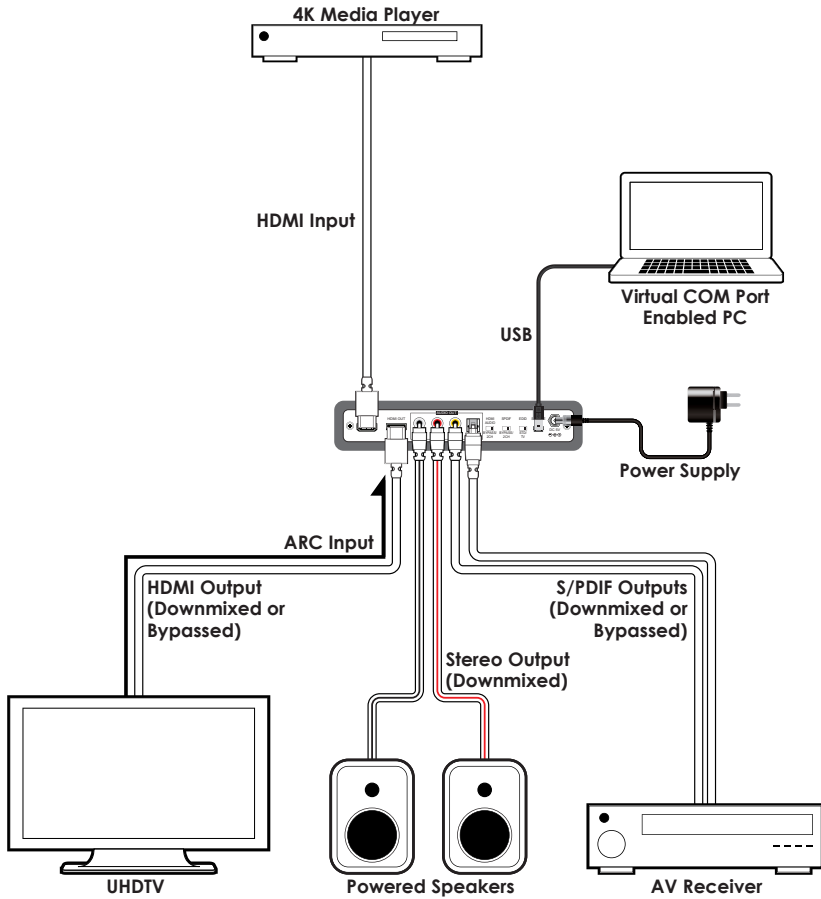
Once the user is finished editing or creating an EDID it can be saved to a \*.bin file locally or uploaded directly to the unit using the “ Save” and “ Upload” icons respectively.

### 6.4.3 System Tab

- **Configuration & Firmware:** Select the System tab to edit the unit's description (select the “ Rename” icon), to reset the unit to factory defaults (select the “ Reset” icon) and to view the unit's current hardware and firmware version information.

EDID Controller	EDID Creator	System
<b>Configuration</b>		
<b>Description :</b>		 
<input type="text"/>		
<b>Firmware</b>		
Current : VID-1000 PID-0008 Version-V2.11		

## 7. CONNECTION DIAGRAM



## 8. SPECIFICATIONS

### 8.1 Technical Specifications

<b>HDMI Bandwidth</b>	600MHz/18Gbps
<b>Input Port</b>	1×HDMI
<b>Output Ports</b>	1×HDMI 1×Optical (S/PDIF) 1×Coaxial (S/PDIF) 2×RCA (Stereo)
<b>Control Interface</b>	1×USB Mini-B
<b>HDMI Cable Length</b>	10m (1080p@60Hz, 12-bit) 3m (4K@60Hz, 4:4:4, 8-bit)
<b>Baud Rate</b>	Up to 115200bps
<b>Power Supply</b>	5V/2.6A DC (US/EU standards, CE/FCC/UL certified)
<b>ESD Protection</b>	Human Body Model: ±8kV (Air Discharge) ±4kV (Contact Discharge)
<b>Dimensions</b>	180mm×25mm×104mm (W×H×D) [Case Only] 180mm×25mm×111.75mm (W×H×D) [All Inclusive]
<b>Weight</b>	374g
<b>Chassis Material</b>	Metal
<b>Silkscreen Color</b>	Black
<b>Operating Temperature</b>	0°C - 40°C/32°F - 104°F
<b>Storage Temperature</b>	-20°C - 60°C/-4°F - 140°F
<b>Relative Humidity</b>	20 - 90% RH (Non-condensing)
<b>Power Consumption</b>	4.8W



## 8.2 Video Specifications

Standard Resolution Support		Input	Output
<b>640×480</b>	60, 72, 75, 85	✓	✓
<b>800×600</b>	56, 60, 72, 75, 85	✓	✓
<b>1024×768</b>	60, 70, 75, 85	✓	✓
<b>1280×720</b>	50, 60	✓	✓
<b>1280×768</b>	60, 75, 85	✓	✓
<b>1280×800</b>	60	✓	✓
<b>1280×1024</b>	60	✓	✓
<b>1360×768</b>	60	✓	✓
<b>1600×1200</b>	60	✓	✓
<b>1920×1200</b>	60 (RB)	✓	✓
<b>720×480p</b>	60	✓	✓
<b>720×576p</b>	50	✓	✓
<b>1280×720p</b>	60	✓	✓
<b>1920×1080i</b>	50, 60	✓	✓
<b>1920×1080p</b>	24, 25, 30, 50, 60	✓	✓
<b>3840×2160p (YUV 4:2:0)</b>	50, 60	✓	✓
<b>4096×2160p (YUV 4:2:0)</b>	50, 60	✓	✓
<b>3840×2160p</b>	24, 25, 30, 50, 60	✓	✓
<b>4096×2160p</b>	24, 25, 30, 50, 60	✓	✓

## 8.3 Audio Specifications

### Input/Output Audio Analysis:

Measurement	Input Connector
	HDMI
Level	0dBfs
Frequency	1kHz

Measurement	Output Connector			
	HDMI	Optical	Coaxial	Analog
Output Level	0~-1dB			2Vrms±10%
THD+N	<0.01%			<0.01%
Frequency Response	±1dB			±1dBfs
SNR	>80dB			>80dB
Crosstalk	<-80dB			<-80dB

### Audio Sampling Rates:

HDMI	32, 44.1, 48, 88.2, 96kHz (Passthrough)
S/PDIF	48kHz (Decoded)

### Input to Output Audio Conversion:

INPUT \ OUTPUT		Analog	HDMI		S/PDIF	
		L/R	BYPASS	2CH	BYPASS	2CH
HDMI	LPCM 2.0	Analog 2 Chan.	LPCM 2.0	LPCM 2.0	LPCM 2.0	LPCM 2.0
	Dolby Digital	Decoded Lt/Rt	Bitstream passthrough	LPCM 2.0 (Lt/Rt)	Bitstream passthrough	LPCM 2.0 (Lt/Rt)
	DTS	Decoded Lo/Ro		LPCM 2.0 (Lo/Ro)		LPCM 2.0 (Lo/Ro)
HDMI ARC	LPCM 2.0	Analog 2 Chan.	HDMI passthrough		LPCM 2.0	LPCM 2.0
	Dolby Digital	Decoded Lt/Rt			ARC Bitstream passthrough	LPCM 2.0 (Lt/Rt)
	DTS	Decoded Lo/Ro				LPCM 2.0 (Lo/Ro)

## 9. ACRONYMS

ACRONYM	COMPLETE TERM
<b>3D</b>	Three-Dimensional
<b>ARC</b>	Audio Return Channel
<b>CEC</b>	Consumer Electronics Control
<b>COM</b>	Communication
<b>DAC</b>	Digital-to-Analog Converter
<b>DVI</b>	Digital Visual Interface
<b>EDID</b>	Extended Display Identification Data
<b>HD</b>	High-Definition
<b>HDCP</b>	High-bandwidth Digital Content Protection
<b>HDMI</b>	High-Definition Multimedia Interface
<b>HDR</b>	High Dynamic Range
<b>LED</b>	Light-Emitting Diode
<b>LPCM</b>	Linear Pulse-Code Modulation
<b>PC</b>	Personal Computer
<b>S/PDIF</b>	Sony/Philips Digital Interface Format
<b>SD</b>	Standard-Definition
<b>UHD</b>	Ultra-High-Definition
<b>USB</b>	Universal Serial Bus



**CYPRESS TECHNOLOGY CO., LTD.**

[www.cypress.com.tw](http://www.cypress.com.tw)